

One of the very significant advantages of SpatialAnalyzer is that development occurs at a brisk pace. New feature requests, bug fixes and changes are implemented quickly, giving you the opportunity to start taking advantage of new or requested features in a very short time.



## New SpatialAnalyzer Version: SA 2014.02.04

### New Instrument Interface: Leica ScanStation P20

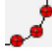
Support for the Leica Geosystems ScanStation P20 room scanner has been added. You must have a firmware license to activate the API Data Access toggle on the P20. You can toggle this on the scanner in **Status > System Information > Options**. The setting must be explicitly activated (it is deactivated by default).

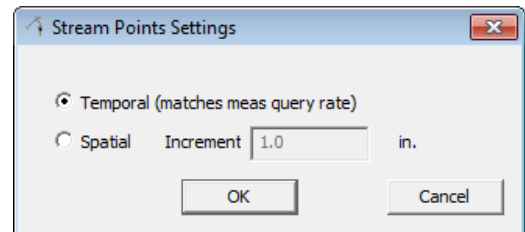
Contact your Leica Geosystems representative for more information.



*ScanStation P20 from Leica Geosystems*

### Arm Toolbar: Stream Points Settings

When working in the arm toolbar, you can now right-click the Stream Points button  to set temporal or spatial scanning mode.

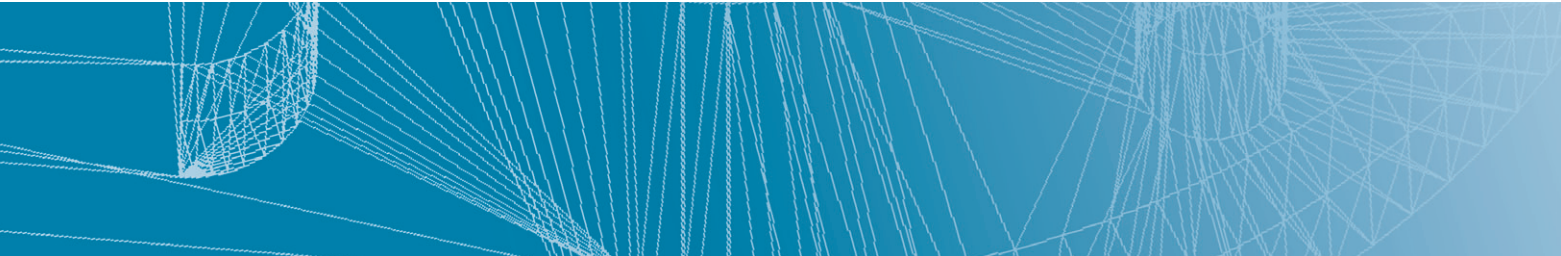


### Shift Pts Along Vector

A new laser tracker measurement operation called “Shift Pts Along Vector” has been added. Along with it, a new measurement profile called “Scan Shifted Pts” or “Measure Shifted Pts” has been added.

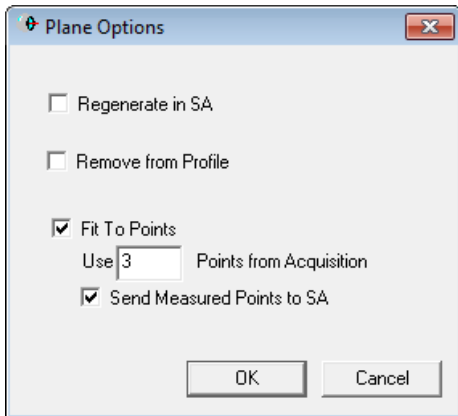
With this operation, you define or measure a plane (as with projection planes) and define an offset (positive or negative). As you measure, each point is shifted by the specified amount.

Note that to reduce potential for confusion, the shifted points will have an offset. Therefore, offset compensation should be considered when deciding on your shift offset. (In other words, if you want to create the point exactly 2” above the center of a 1.5” SMR, use 2” for the offset value - not 1.25”).



### Sending Measured Plane Points

Laser tracker measurement operations that provide the option of measuring a projection or reference plane in situ now also provide an option to send measured points, so that the points defining the plane now appear in SA as well.

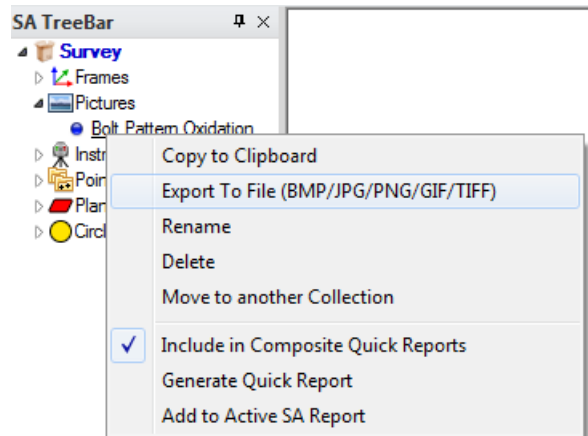


### Report Image Drag and Drop

Supported images can now be dragged from the desktop directly into an SA Report. The file will be automatically embedded into the open job file's tree.

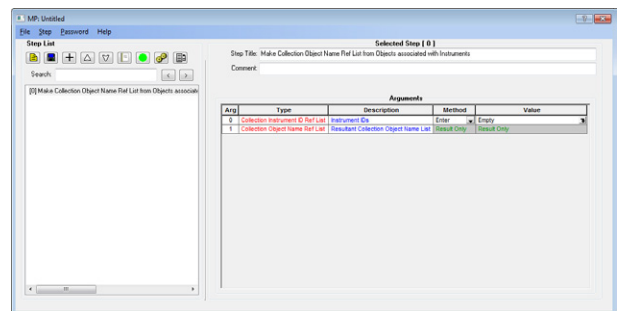
### Image Export From the Tree

Any embedded image in the tree can now be exported to an external image file by right-clicking the picture in the tree and selecting **Export To File (BMP/JPG/PNG/GIF/TIFF)**.



### MP Editor Improvements

The **MP Editor** has been modified to make resizing easier. In older versions, resizing the MP Editor required resizing multiple nested tables. Now, the window holds just one nested table which automatically resizes with the window. Also, MP commands with very long argument lists are now displayed in their entirety, without requiring you to scroll down in a nested table



### DOWNLOAD DER NEUESTEN SpatialAnalyzer VERSION

Please note: You download the actual full version of SpatialAnalyzer, but you can use only the full functionality if you have an actual software license key. In other cases you can only work with the SA viewer.



Download the new version [here...](#)